

## LEGEND

- Glue
- ✱ Cutout - make a hole



Model : No. 0075/III/09



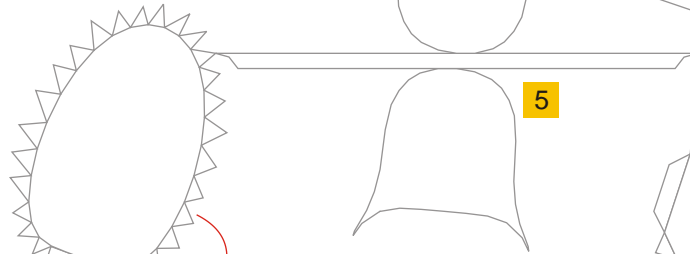
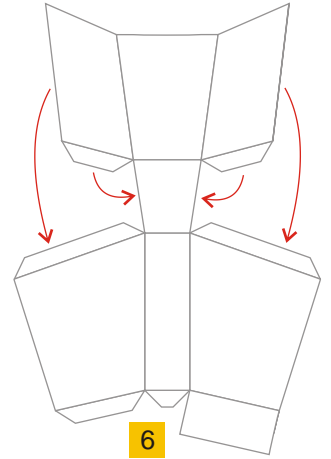
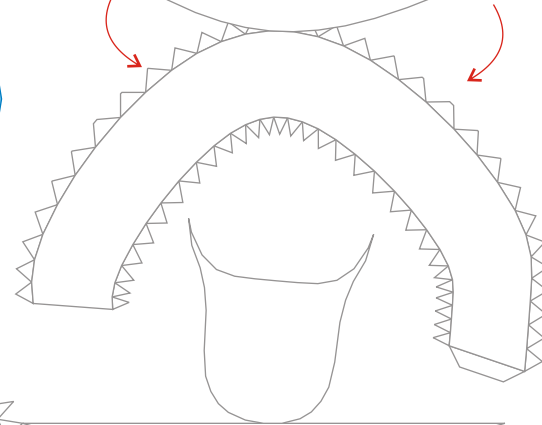
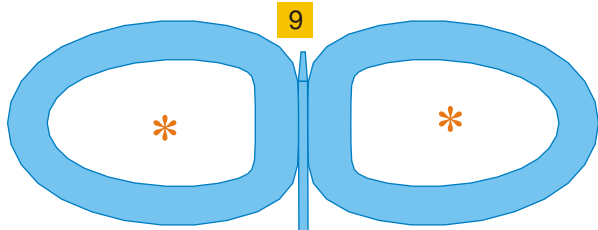
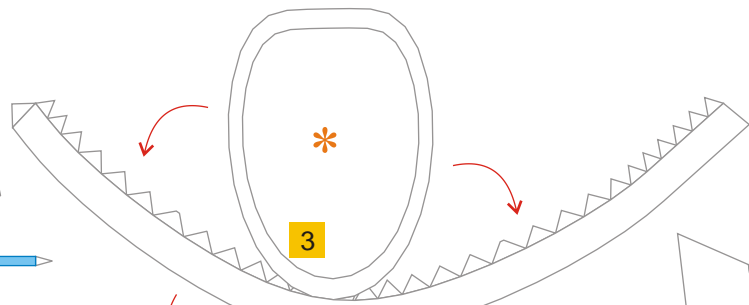
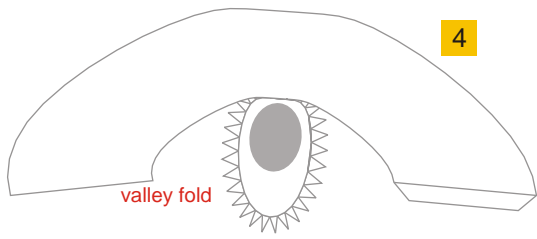
# Toilet

A request from a friend, was not publish for a long time until now. It comes with 3 colors. Please be advised some parts are without tabs/ flaps. The ancient cities of the Indus Valley Civilization, e.g., Harappa and Mohenjo-daro which are located in present day India & Pakistan had flush toilets attached to a sophisticated sewage system—and other forms of toilets were used both in the time of the Romans and Egyptians as well. Although a precursor to the modern flush toilet system was designed in 1596 by John Harington, the toilet did not enter into widespread use until the late nineteenth century, when it was adopted in English upper class residences.

**Assembly Instructions - click here**

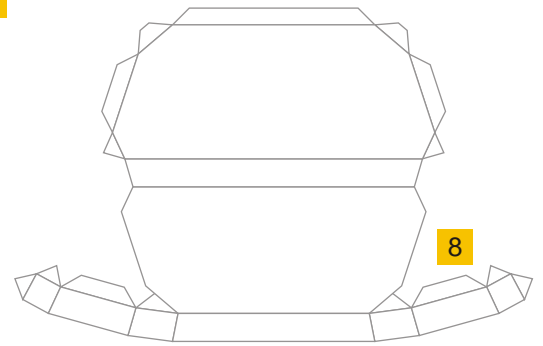
Petunjuk Perakitan



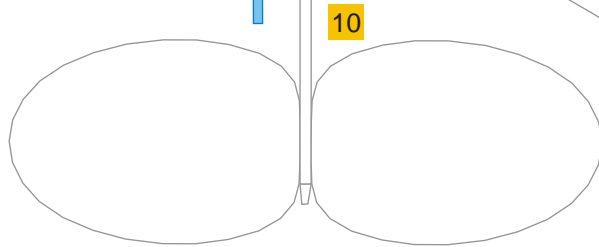


2

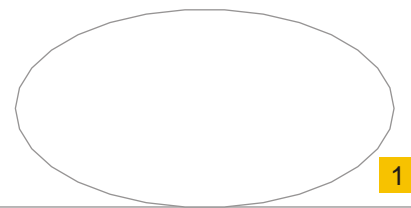
5



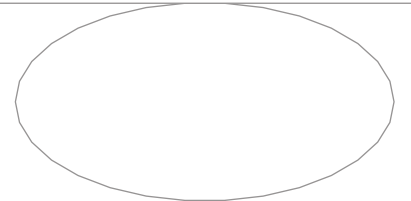
8



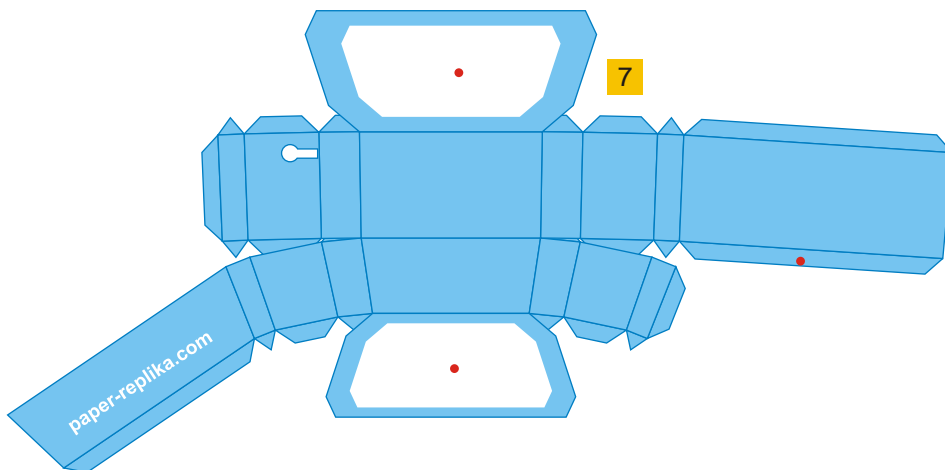
10



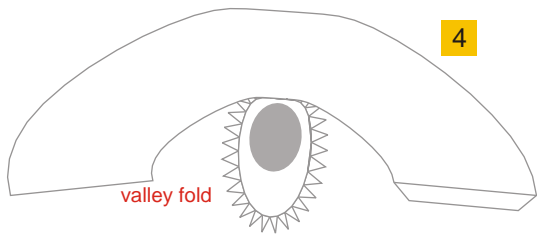
1



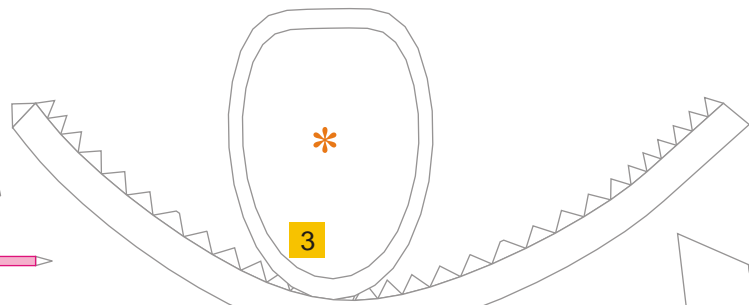
7



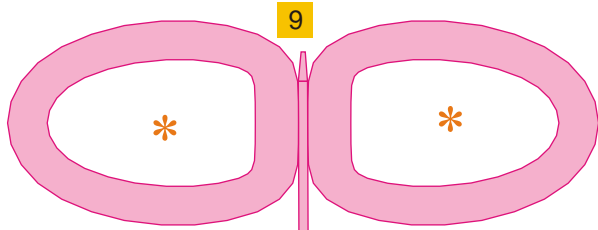
paper-replika.com



4

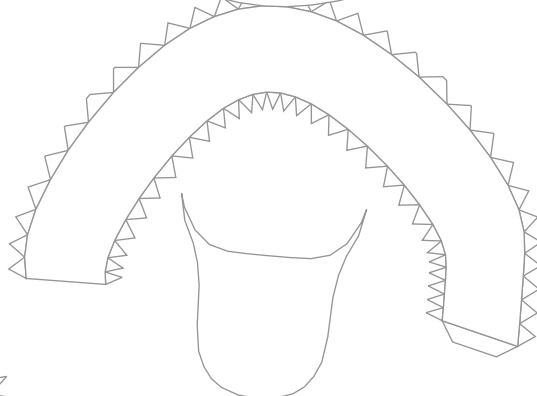


3

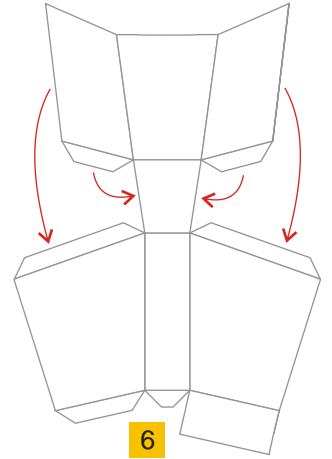


9

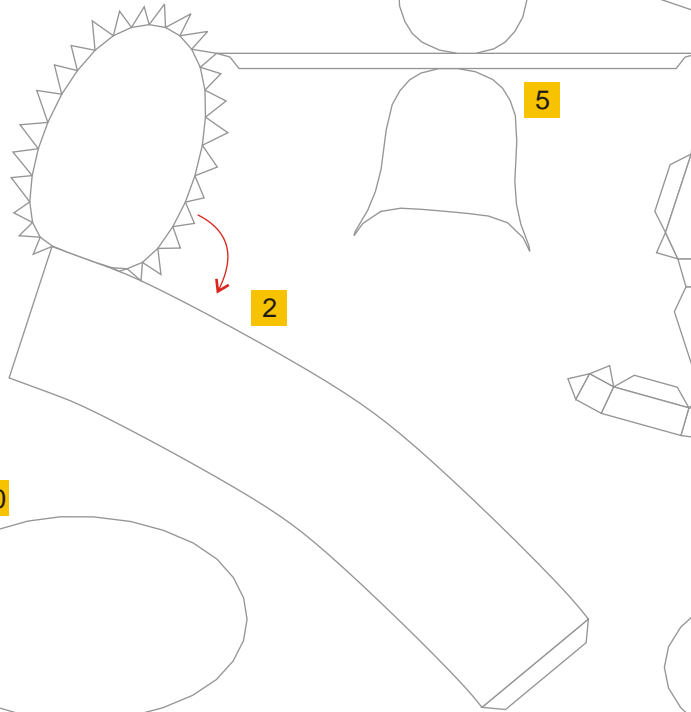
9



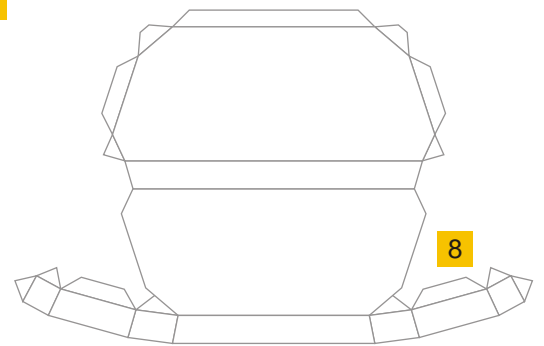
5



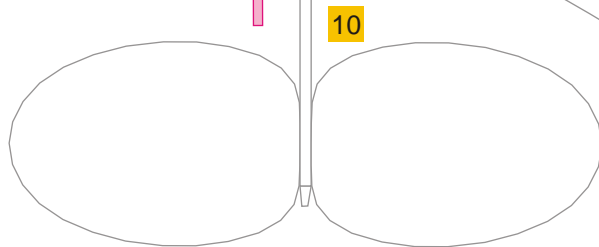
6



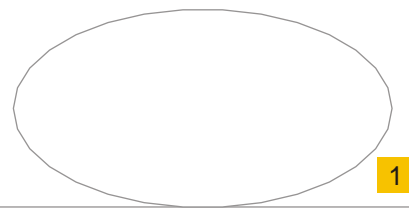
2



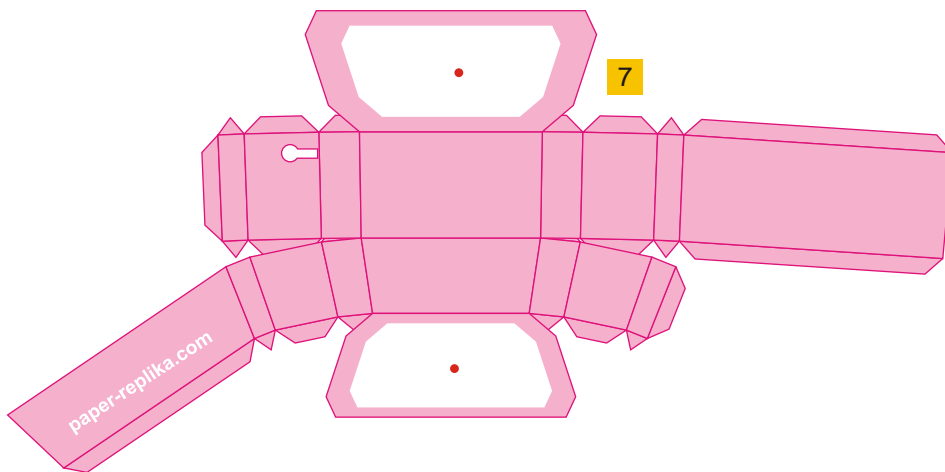
8



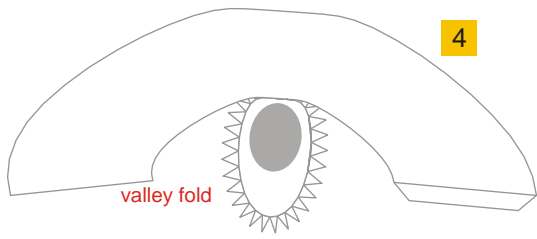
10



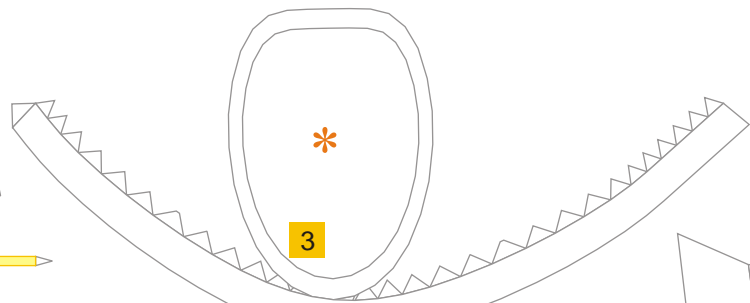
1



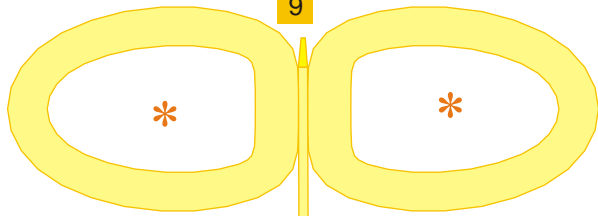
7



4

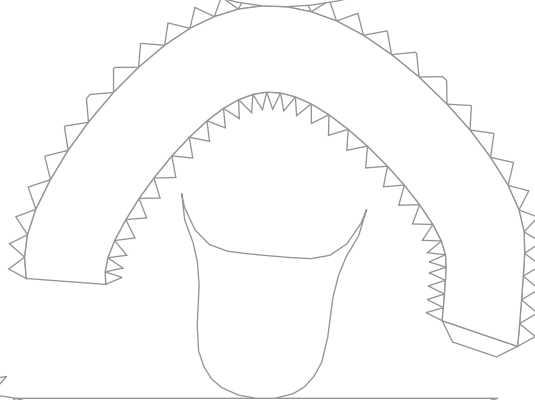


3

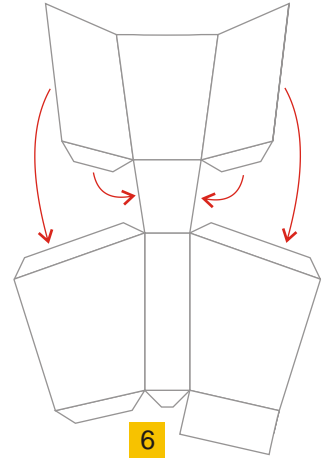


9

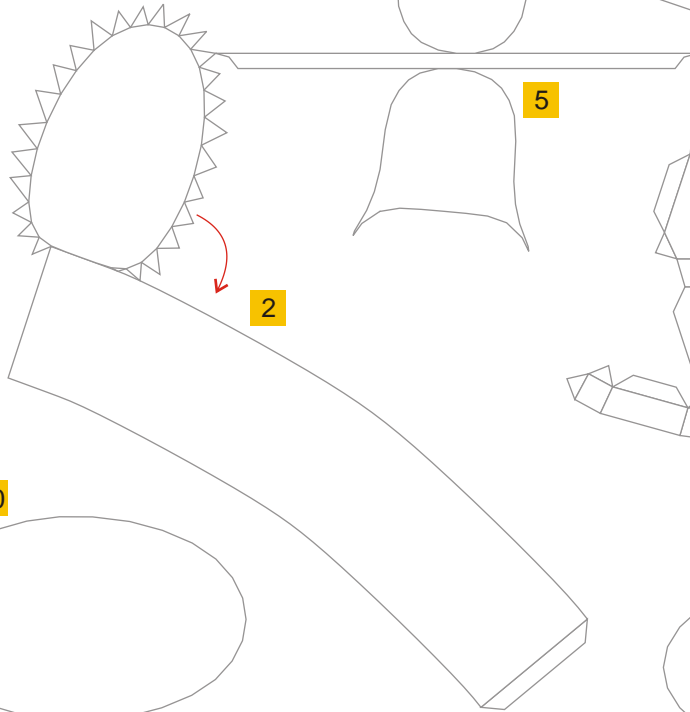
9



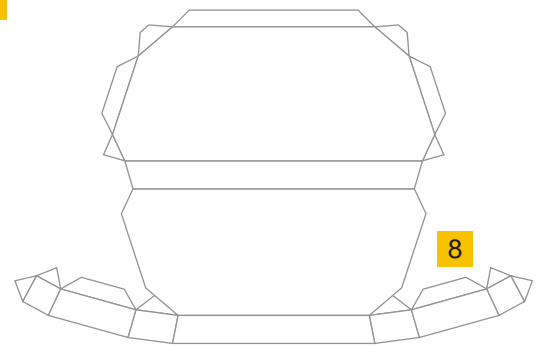
5



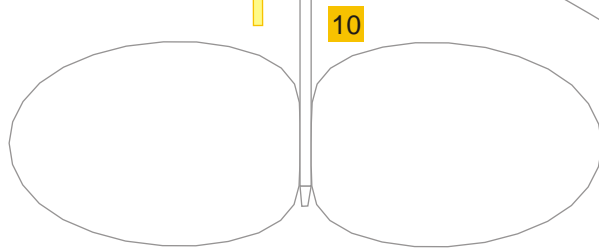
6



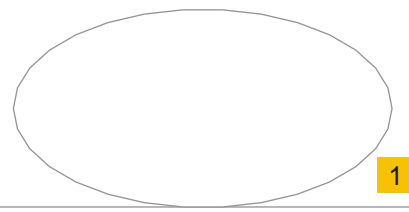
2



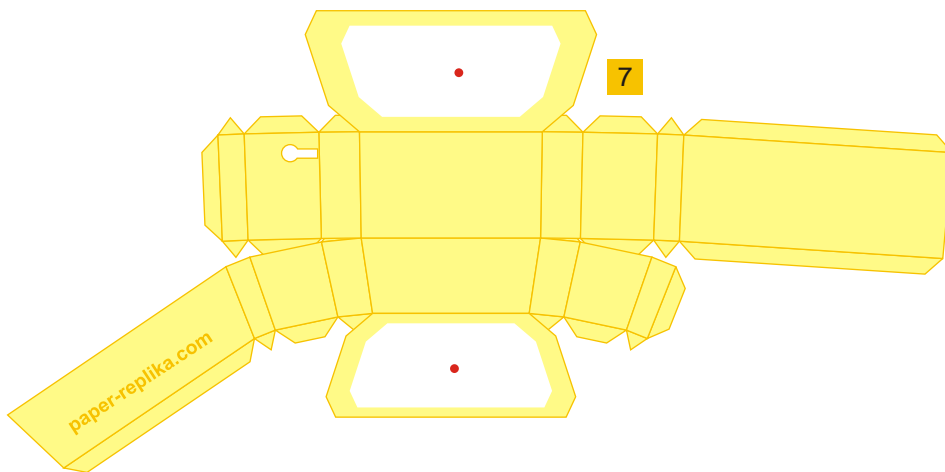
8



10



1



7

paper-replika.com